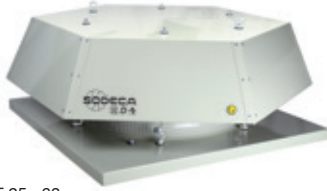


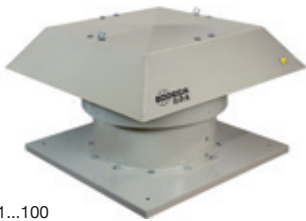
ROOF-MOUNTED ATEX EXTRACTOR FANS

HT/ATEX

Roof-mounted helical extractor fans with ATEX Certification and possibility of Ex e, Ex d, Ex tc and Ex tb marking



HT 25...63



HT 71...100

Roof-mounted extractor fans with flat base and ATEX Certification, with CEE ExII2G Ex e anti-explosive, CEE ExII2G Ex d, Ex tc, or Ex tb non-sparking motor for working in explosive atmospheres containing dust or gas.

Fan:

- Support base in galvanised sheet steel with painted aluminium strip in rotor zone, in accordance with standard EN-14986
- Cast aluminium rotor
- Non-sparking cable gland included
- Anti-contact protective grille pursuant to standard UNE-EN ISO 12499
- Rain cap made of painted galvanised sheet steel, with corrosion-proof protection
- Motor-rotor airflow direction

Motor:

- Class F motors with ball bearings and ATEX Ex e explosion-proof and Ex, Ex tx or Ex tb non-sparking certification
- Three-phase 230/400V-50Hz (up to 4 kW) and 400/690V-50Hz (powers greater than 4 kW)
- Operating temperature: -20°C +40°C

Finish:

- ATEX corrosion-proof, with non-ferric paint finish of polyester resin polymerised at



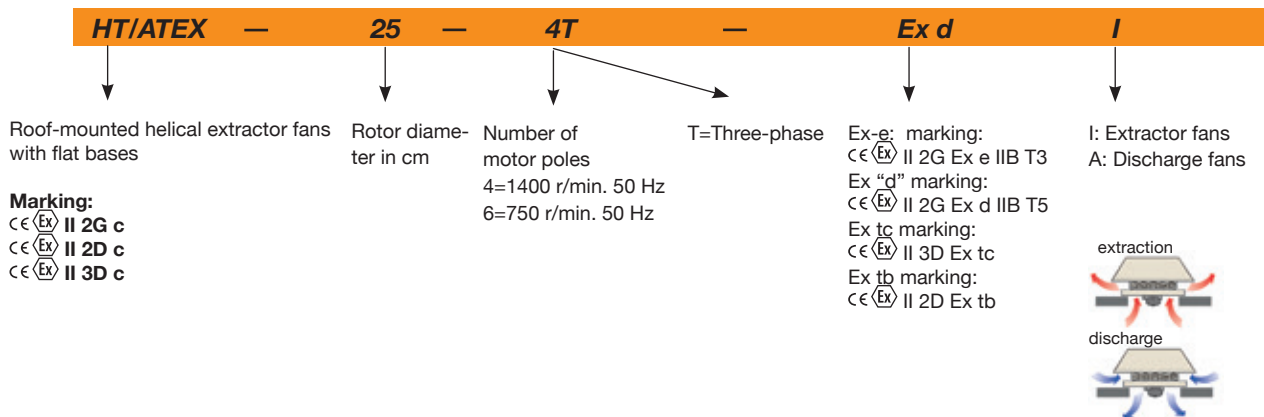
Ex "e" marking: CEE Ex II 2G Ex e
 Ex "d" marking: CEE Ex II 2G Ex d
 Ex tc marking: CEE Ex II 3D Ex tc
 Ex tb marking: CEE Ex II 2D Ex tb
 Notified Body: L.O.M.
 Identification no.: LOM3ATEX0157

190°C, previously degreased with phosphate-free nanotechnological treatment

On request:

- Motors with built-in PTC
- Special windings for different voltages and frequencies
- ATEX construction for different categories
- Extractor fans with 2-speed motors
- Single-phase, Ex d non-sparking motors

Order code



Technical characteristics

| Model | Speed (r/min) | Maximum current admissible (A) | | | Installed power (kW) | Maximum flow rate (m³/h) | Sound pressure level dB(A) | | Approx. weight (Kg) |
|---------------|------------------|--------------------------------|------|------|-------------------------|-----------------------------|----------------------------|-----------|------------------------|
| | | 230V | 400V | 690V | | | Aspiration | Discharge | |
| HT/ATEX-25-4T | 1320 | 0.65 | 0.38 | 0.09 | 1080 | 41 | 40 | 12.5 | |
| HT/ATEX-31-4T | 1320 | 0.65 | 0.38 | 0.09 | 1800 | 47 | 46 | 13.3 | |
| HT/ATEX-35-4T | 1320 | 0.65 | 0.38 | 0.09 | 2600 | 48 | 47 | 17.5 | |
| HT/ATEX-40-4T | 1370 | 2.08 | 1.20 | 0.25 | 4600 | 51 | 50 | 21.0 | |
| HT/ATEX-45-4T | 1370 | 2.60 | 1.50 | 0.37 | 6500 | 55 | 53 | 29.0 | |
| HT/ATEX-50-4T | 1410 | 2.94 | 1.70 | 0.55 | 8500 | 59 | 57 | 36.0 | |
| HT/ATEX-56-4T | 1410 | 3.81 | 2.20 | 0.75 | 9800 | 61 | 57 | 35.0 | |
| HT/ATEX-56-6T | 910 | 2.42 | 1.40 | 0.25 | 6600 | 48 | 46 | 46.0 | |
| HT/ATEX-63-4T | 1410 | 5.20 | 3.00 | 1.10 | 14000 | 63 | 59 | 65.8 | |
| HT/ATEX-63-6T | 935 | 2.77 | 1.60 | 0.37 | 9200 | 52 | 49 | 61.8 | |
| HT/ATEX-71-4T | 1400 | 6.93 | 4.00 | 1.50 | 18000 | 69 | 67 | 64.0 | |
| HT/ATEX-71-6T | 930 | 3.46 | 2.00 | 0.55 | 12200 | 58 | 56 | 64.9 | |
| HT/ATEX-80-4T | 1410 | 9.01 | 5.20 | 2.20 | 26200 | 73 | 70 | 87.8 | |

Technical characteristics

| Model | Speed (r/min) | Maximum current admissible (A) | | | Installed power (kW) | Maximum flow rate (m³/h) | Sound pressure level dB(A) | | Approx. weight (Kg) |
|--------------------|------------------|-----------------------------------|-------|------|----------------------------|--------------------------------|----------------------------|-----------|---------------------------|
| | | 230V | 400V | 690V | | | Aspiration | Discharge | |
| HT/ATEX-80-6T | 910 | 5.89 | 3.40 | | 1.10 | 18000 | 64 | 61 | 81.8 |
| HT/ATEX-90-4T | 1440 | 12.30 | 7.10 | | 3.00 | 31500 | 77 | 74 | 94.0 |
| HT/ATEX-90-6T | 940 | 7.62 | 4.40 | | 1.50 | 21200 | 68 | 65 | 91.0 |
| HT/ATEX-100-4T-7,5 | 1440 | | 12.00 | 6.93 | 5.50 | 37000 | 80 | 77 | 114.0 |
| HT/ATEX-100-4T-10 | 1448 | | 16.30 | 9.41 | 7.50 | 44000 | 84 | 81 | 125.0 |
| HT/ATEX-100-6T-2 | 940 | 7.62 | 4.40 | | 1.50 | 25000 | 71 | 68 | 102.0 |
| HT/ATEX-100-6T-3 | 940 | 9.35 | 5.40 | | 2.20 | 28200 | 75 | 72 | 106.0 |

Acoustic characteristics

The indicated values are determined by measuring the pressure and noise level and noise level in dB(A) obtained in a free field at a distance of 6 m.

Noise power spectrum Lw(A) in dB(A) frequency band in [Hz]

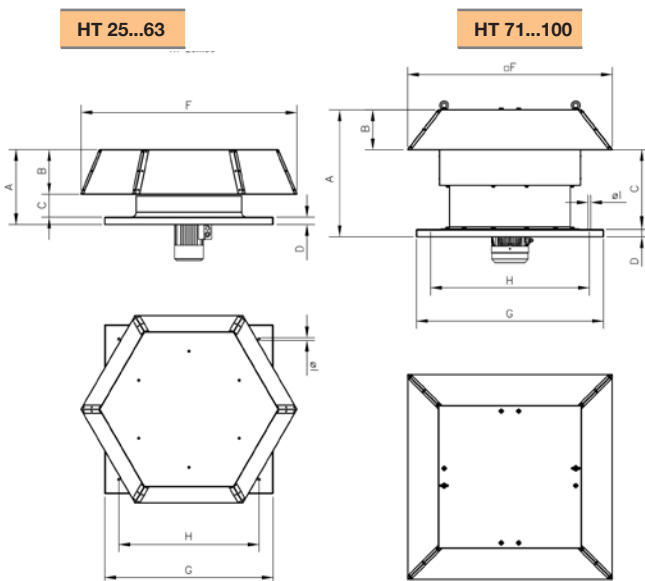
Values taken during aspiration with 2/3 maximum flow rate (2/3Qmax)

| Model | 63 | 125 | 250 | 500 | 1000 | 2000 | 4000 | 8000 |
|-----------|----|-----|-----|-----|------|------|------|------|
| 25 | 27 | 37 | 54 | 54 | 62 | 58 | 51 | 42 |
| 31 | 33 | 43 | 60 | 60 | 68 | 64 | 57 | 48 |
| 35 | 34 | 44 | 61 | 61 | 69 | 65 | 58 | 49 |
| 40 | 28 | 45 | 57 | 65 | 70 | 70 | 66 | 59 |
| 45 | 32 | 49 | 61 | 69 | 74 | 74 | 70 | 63 |
| 50 | 36 | 53 | 65 | 73 | 78 | 78 | 74 | 67 |
| 56-4 | 38 | 55 | 67 | 75 | 80 | 80 | 76 | 69 |
| 56-6 | 25 | 42 | 54 | 62 | 67 | 67 | 63 | 56 |
| 63-4 | 40 | 57 | 69 | 77 | 82 | 82 | 78 | 71 |
| 63-6 | 29 | 46 | 58 | 66 | 71 | 71 | 67 | 60 |
| 71-4 | 46 | 63 | 75 | 83 | 88 | 88 | 84 | 77 |
| 71-6 | 35 | 52 | 64 | 72 | 77 | 77 | 73 | 66 |
| 80-4 | 57 | 78 | 85 | 90 | 93 | 89 | 82 | 71 |
| 80-6 | 48 | 69 | 76 | 81 | 84 | 80 | 73 | 62 |
| 90-4 | 61 | 82 | 89 | 94 | 97 | 93 | 86 | 75 |
| 90-6 | 52 | 73 | 80 | 85 | 88 | 84 | 77 | 66 |
| 100-4-7.5 | 64 | 85 | 92 | 97 | 100 | 96 | 89 | 78 |
| 100-4-10 | 68 | 89 | 96 | 101 | 104 | 100 | 93 | 82 |
| 100-6-2 | 55 | 76 | 83 | 88 | 91 | 87 | 80 | 69 |
| 100-6-3 | 59 | 80 | 87 | 92 | 95 | 91 | 84 | 73 |

Values taken during discharge with 2/3 maximum flow rate (2/3Qmax)

| Model | 63 | 125 | 250 | 500 | 1000 | 2000 | 4000 | 8000 |
|-----------|----|-----|-----|-----|------|------|------|------|
| 25 | 26 | 36 | 53 | 53 | 61 | 57 | 50 | 41 |
| 31 | 32 | 42 | 59 | 59 | 67 | 63 | 56 | 47 |
| 35 | 33 | 43 | 60 | 60 | 68 | 64 | 57 | 48 |
| 40 | 27 | 44 | 56 | 64 | 69 | 69 | 65 | 58 |
| 45 | 30 | 47 | 59 | 67 | 72 | 72 | 68 | 61 |
| 50 | 34 | 51 | 63 | 71 | 76 | 76 | 72 | 65 |
| 56-4 | 34 | 51 | 63 | 71 | 76 | 76 | 72 | 65 |
| 56-6 | 23 | 40 | 52 | 60 | 65 | 65 | 61 | 54 |
| 63-4 | 36 | 53 | 65 | 73 | 78 | 78 | 74 | 67 |
| 63-6 | 26 | 43 | 55 | 63 | 68 | 68 | 64 | 57 |
| 71-4 | 44 | 61 | 73 | 81 | 86 | 86 | 82 | 75 |
| 71-6 | 33 | 50 | 62 | 70 | 75 | 75 | 71 | 64 |
| 80-4 | 54 | 75 | 82 | 87 | 90 | 86 | 79 | 68 |
| 80-6 | 45 | 66 | 73 | 78 | 81 | 77 | 70 | 59 |
| 90-4 | 58 | 79 | 86 | 91 | 94 | 90 | 83 | 72 |
| 90-6 | 49 | 70 | 77 | 82 | 85 | 81 | 74 | 63 |
| 100-4-7.5 | 61 | 82 | 89 | 94 | 97 | 93 | 86 | 75 |
| 100-4-10 | 65 | 86 | 93 | 98 | 101 | 97 | 90 | 79 |
| 100-6-2 | 52 | 73 | 80 | 85 | 88 | 84 | 77 | 66 |
| 100-6-3 | 56 | 77 | 84 | 89 | 92 | 88 | 81 | 70 |

Dimensions mm



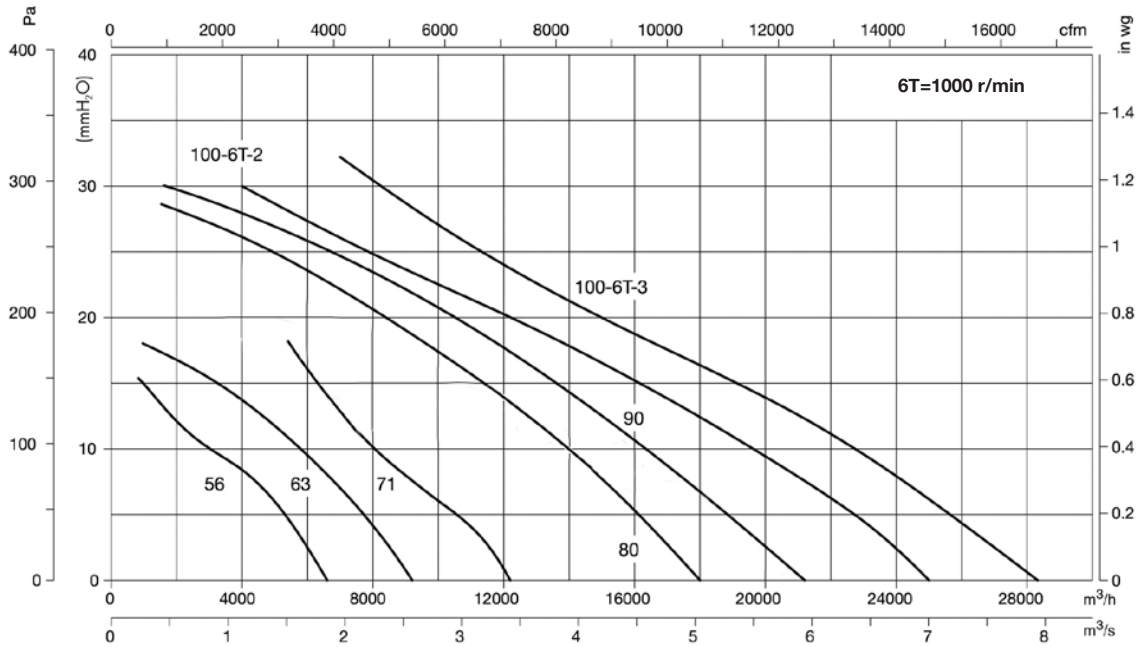
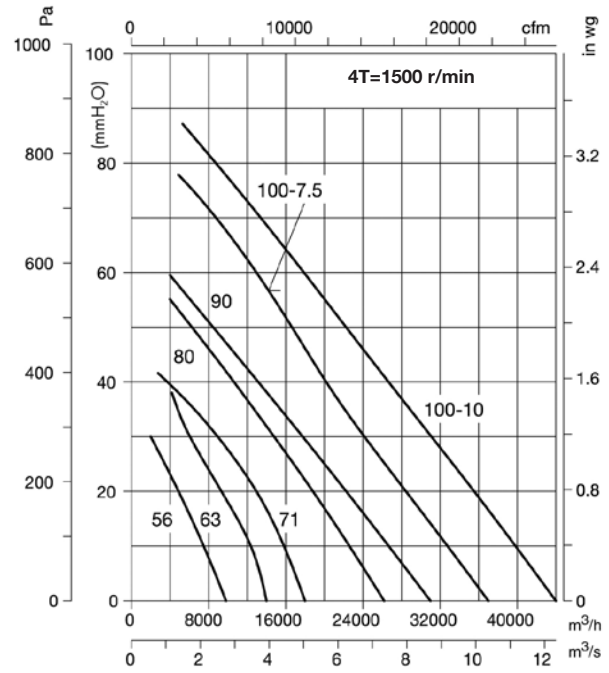
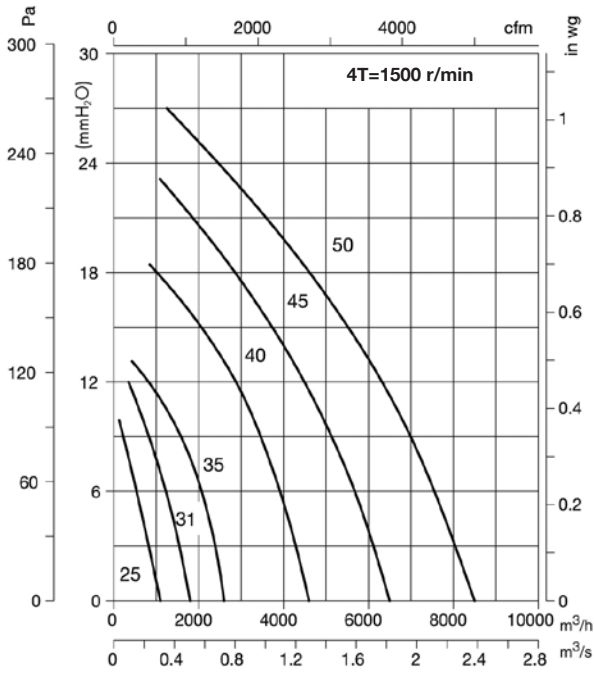
| Model | A | B | C | D | F | G | H | I |
|--------|------|-----|-----|----|------|------|------|----|
| HT-25 | 223 | 140 | 43 | 40 | 634 | 450 | 360 | 12 |
| HT-31 | 245 | 140 | 65 | 40 | 634 | 500 | 410 | 12 |
| HT-35 | 270 | 184 | 61 | 40 | 808 | 560 | 450 | 12 |
| HT-40 | 295 | 184 | 86 | 40 | 808 | 630 | 530 | 12 |
| HT-45 | 342 | 202 | 90 | 50 | 923 | 710 | 590 | 12 |
| HT-50 | 373 | 238 | 85 | 50 | 1154 | 880 | 680 | 12 |
| HT-56 | 402 | 238 | 124 | 40 | 1154 | 900 | 750 | 14 |
| HT-63 | 457 | 277 | 141 | 40 | 1384 | 1000 | 850 | 14 |
| HT-71 | 760 | 195 | 565 | 40 | 1120 | 1000 | 850 | 14 |
| HT-80 | 790 | 215 | 575 | 50 | 1252 | 1150 | 1000 | 14 |
| HT-90 | 910 | 232 | 678 | 50 | 1380 | 1150 | 1000 | 14 |
| HT-100 | 1055 | 252 | 803 | 50 | 1527 | 1250 | 1100 | 14 |

ROOF-MOUNTED ATEX EXTRACTOR FANS

Characteristic curves

Q= Flow rate in m³/h, m³/s and cfm.

Pe= Static pressure in mmH₂O, Pa and inwg.



Accessories

See accessories section

